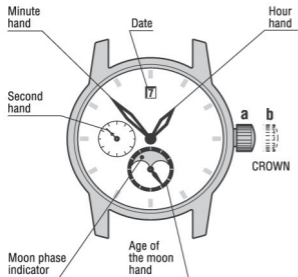


MODEL 3105.79 and 3105

Movement POLJOT Russia.



Notes: Crown has 2 positions:

- a – mainspring winding;
- b – time/date setting.

Pusher A – start and stop of the stopwatch;

Pusher B – reset of the stopwatch.

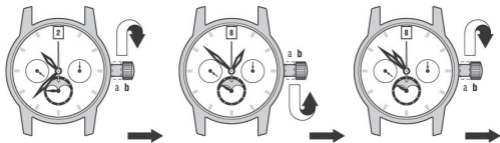
WATCH WINDING

Turning the crown clockwise in the Pos. “a” wind up to the stop the mainspring of the watch.

- It can be allowed to wind the watch turning the crown counterclockwise and clockwise alternatively.
- Do not wind your watch with all your might, it can result in a break age of the winding device or the mainspring.

TIME/CALENDAR SETTING

1. Pull the crown in Pos. “b”, turning it clockwise, turn hands until the desired age and (or) phase of the moon installs.
2. Turn hands clockwise and counterclockwise alternatively in the range 12h—11h–12h by the crown until the previous day’s date appears.
3. Turning the crown clockwise, turn hands until the desired date appears. Continuing turning crown set the hands to the desired time.
4. Return the crown in Pos. “a”.



When setting the hour hand check that AM/PM is correctly set. The watch is so designed that the date changes once in 24 hours. Turn the hands past the 12 o'clock marker to determine whether the watch is set for the A.M. or P.M. period. If the date changes, the time is set for the A.M. period. If the date does not change, the time is set for the P.M. period.

ATTENTION!

- It is necessary to correct the date manually at the end of February and all short (30 days) months.
- If it is necessary to correct date in Cal. 31679, 3105.79, fulfil fast correction only as at 2 item. Otherwise, the age or phase of the moon can change too.

To set the Moon Phase you need to put the winding crown at extreme right position and turning the crown clock wise to set the current phase of Lunar calendar corresponding to the current date of the Sun calendar
(see encl.) After setting of Moon Phase it is necessary to correct the date in the calendar window because change date change occurs automatically when passing over the midnight. It can be done by turning hands clockwise and counterclockwise in the range 1h-10h-1h (see“Time/Calendar setting”).

WARRANTY AND MANUFACTURER INFO

The manufacturer warranty period is valid for 12 months from the purchase date. In each country of sale the legal, country-specific guarantee conditions apply. The customer shall not have any claim under this warranty if:

- the watch does not have warranty card;
- the watch has been repaired by unauthorized service center or person;
- the watch is not used in accordance with the Instructions supplied in this User's Manual.

The Warranty does not cover the watch-case, crystal, band, bracelet and packing. If hidden faults are detected during the warranty period, the watch can be repaired at the warranty watch service shop marked by your local distributor. The right for war-

ranty service is provided by the guarantee certificate attached to the given warranty-card of your watch. The claims on watch replacement or repayment are satisfied upon submission of the certificate from the guarantee service.

manufacturer and distributor:
VOLMAX GROUP LTD
MARKSISTSKAYA STREET, 34, B. 5
109147, MOSCOW
TEL. +7 495 911 32 10
info@sturmanskie.ru
www.sturmanskie.ru